



CLOUD HUB

NEW LIVING CONNECTIONS



CONTENTS

INTRODUCTION	0 5
PROJECT	1 3
TYPESOLOGIES	4 1
CONTACTS	5 9



Welcome to

DUBAI

a city of skyscrapers, ports, and beaches, where big business takes place alongside sun-seeking tourism. Because of its large expatriate population, it feels like a Middle Eastern melting pot.



LOCATION

DUBAI

Dubai is a city and emirate in the United Arab Emirates known for luxury shopping, ultramodern architecture and a lively nightlife scene.



JUMEIRAH VILLAGE CIRCLE

Jumeirah Village Circle is a new development situated alongside Sheikh Zayed Road, the main highway running the length of Dubai. The housing here consists of large villas, town houses and apartments.



ATTRACTIONS

DUBAI MARINA

Dubai Marina is an affluent residential neighborhood known for The Beach at JBR, a leisure complex with alfresco dining and sandy stretches to relax on. Smart cafes and pop-up craft markets line waterside promenade Dubai Marina Walk, while Dubai Marina Mall is packed with chain and luxury fashion brands. Upscale yachts cruise through the large man-made marina, where activities range from jet-skiing to skydiving.



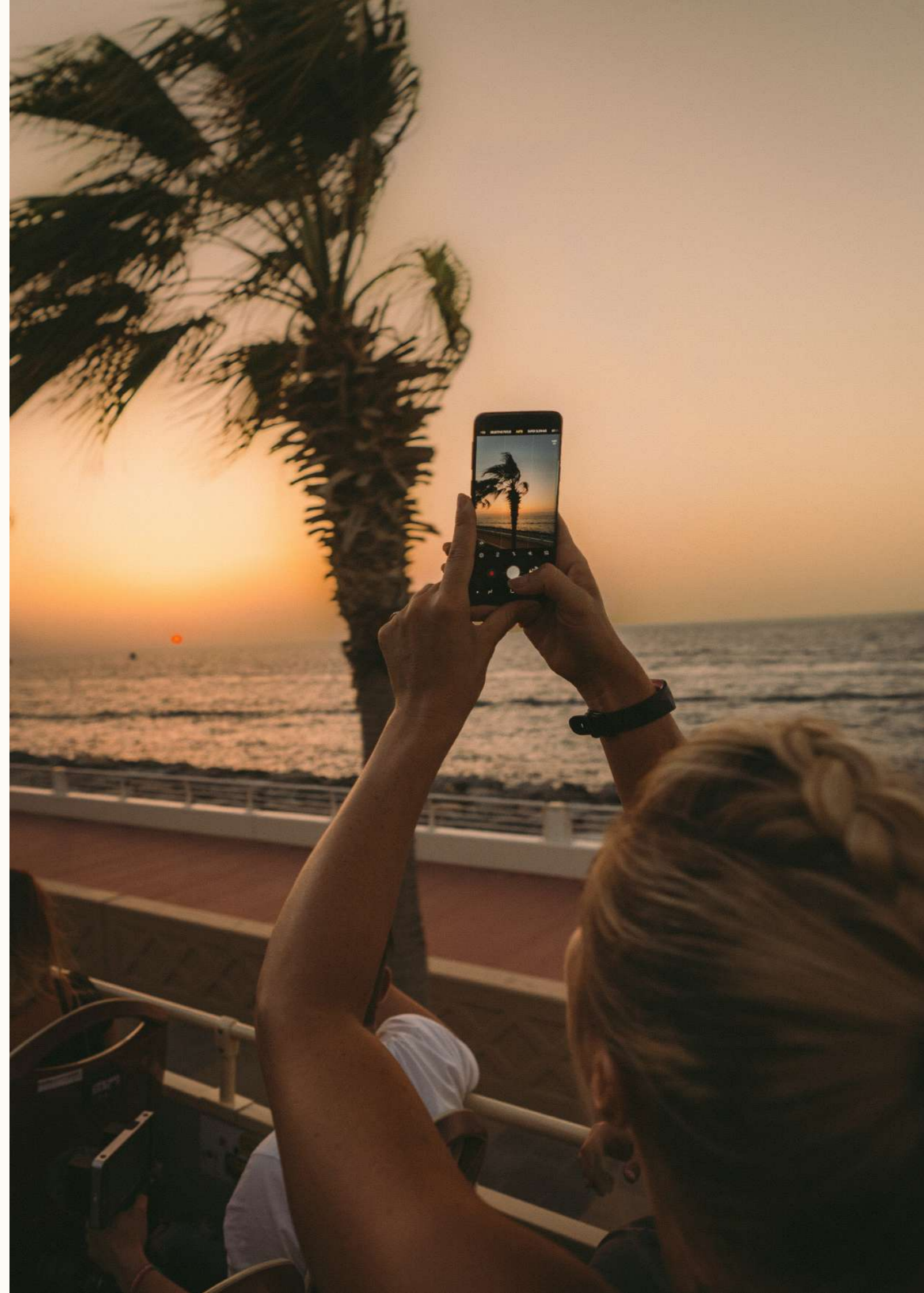
JUMEIRAH LAKES TOWERS

The Jumeirah Lakes Towers is a large development in Dubai, which consists of 80 towers constructed along the edges of the artificial lakes. It offers a wide range of facilities, such as bars and restaurants, hotels, healthcare and educational facilities.



At the heart of
**PERSIAN
GULF**

Enjoy Dubai's beach vibes: clear blue warm water and golden sands of the Persian Gulf, water-sport activities and a vibrant seaside gastronomy.



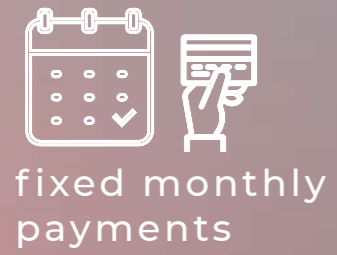


Become a part of **JVC** **COMMUNITY**

Jumeirah Village Circle is a new development situated alongside one of the most popular Dubai communities that attracts an equal mix of families, young couples and single and offers the calm ambient of the area, surrounded by lush gardens and canals evoking. The JVC area became a home for a lot of expats, making it a perfect place to enjoy the fusion of local and international cultures.

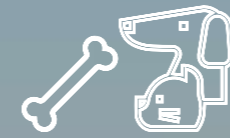


affordable





5 star gym



pet friendly



coffeehouse

social



coworking area



regular events



rooftop pool



Perfect for
YOUNG FAMILIES



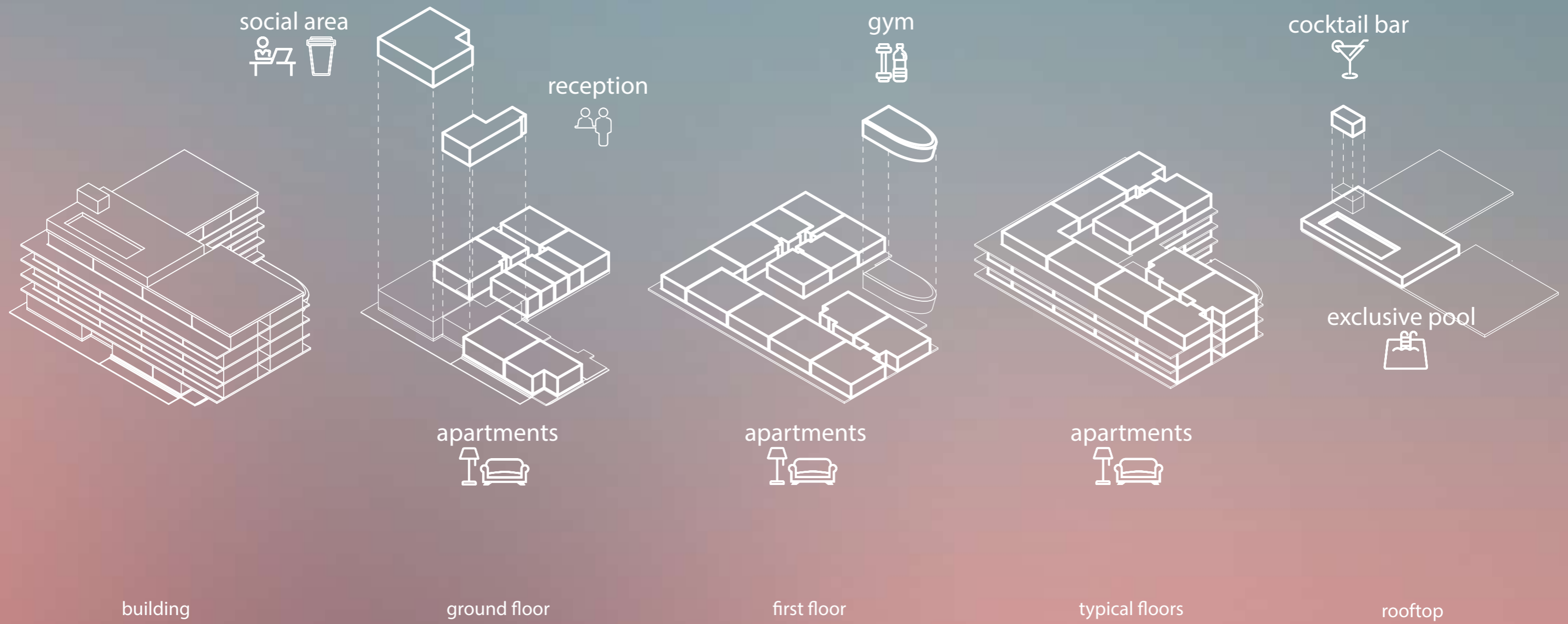
Ideal for

BRILLIANT & ACTIVE

**OPEN, WELCOMING AND
INCLUSIVE**

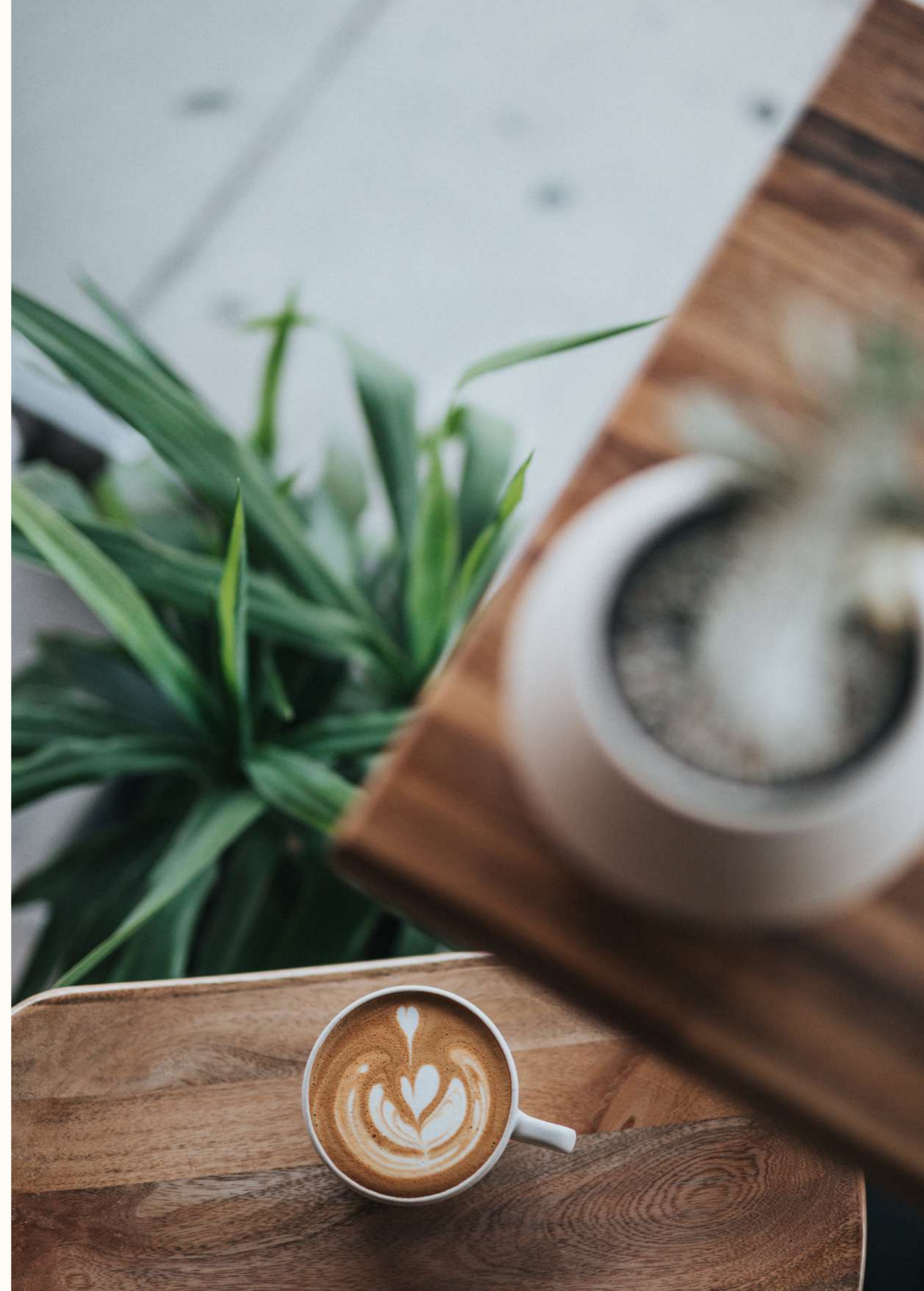


THE IDEAL PLACE FOR YOUR WORKLIFE BLEND TO SOCIALIZE AND SHARE SERVICES



BE WELCOMED

The CLOUD HUB is a place where you are always welcomed. 24 hours reception with a concierge guarantees your comfort and security.



A DESIRABLE PLACE
TO BE



Cloud Hub

01	02	03	04	05
06	07	08	09	10
11	12	13	14	15
16	17	18	19	20
21	22	23	24	25
26	27	28	29	30
31	32	33	34	35
36	37	38	39	40
41	42	43	44	45
46	47	48	49	50
51	52	53	54	55
56	57	58	59	60



CO-LIVE

Buying a property at the CLOUD HUB you don't only get an apartment but you have an access to various common space carefully designed. Become a part of the Cloud community and share some special moments with them starting from the Lobby where the residents and their guests are welcomed by a concierge. Then move to the co-living area to enjoy the CLOUD LOUNGE area where you can relax reading a book, have a chat with your neighbors or work if you need.

CO-WORK

What is a perfect place to work? The CLOUD HUB offers to its residents a co-working area designed according to all the workspace standards. This makes the CLOUD HUB the right place for businesslike and active.





FEEL WELL

Improve the state of your well-being with the CLOUD HUB. Thanks to the rooftop outdoor pool area it's very easy to integrate wellness rituals into your everyday routines.

ENJOY YOUR LIFE



ENJOY THE GLAMOUR



TAKE CARE

The CLOUD GYM is well equipped and offers all the necessary services to stay fit and take care about your body and mind!



TAKE CONTROL OF YOUR HEALTH





DISCOVER

Every CLOUD HUB Apartment has a layout designed in a way to boost different moments to discover: living, dining and night areas connected together in a way to create some intimacy or on the contrary to share special moments with your loved ones.

SHARE THE MOMENTS

TYPICAL 3 BEDROOM APARTMENT



RELAX

TYPICAL 2 BEDROOM APARTMENT





RECOVER YOURSELF

In many ways the bedroom is the most important space in the house, an area to recover yourself. Enjoy the soundproofed bedrooms of the CLOUD HUB designed to create the intimacy and calm needed for easy, restful sleep.

RELAX

TYPICAL BEDROOM



Enjoy your

DAILY RITUALS

Following some daily rituals benefits our mind and well-being and decreases stress. You will find the right place for any of your daily routine in your CLOUD HUB apartment to enhance your overall health, both physically and mentally.



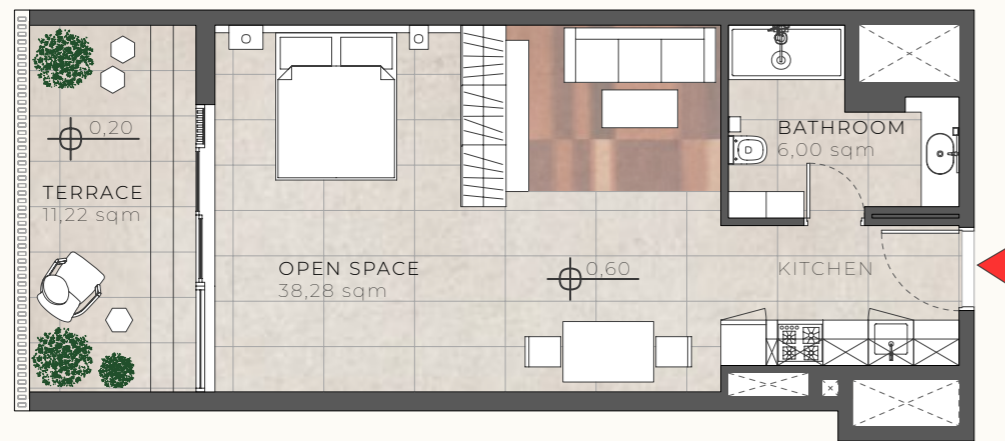
PRIORITIZE YOUR WELLBEING

TYPICAL STUDIO APARTMENT



STUDIO

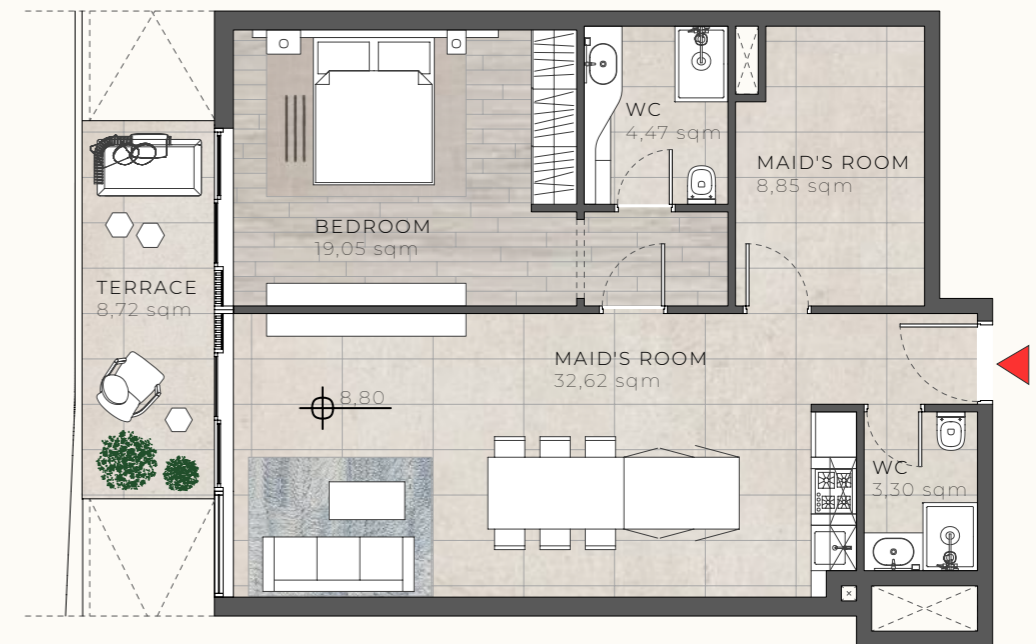
TYPICAL APARTMENT



TOTAL AREA: 46,44 sqm

1 BEDROOM APARTMENT

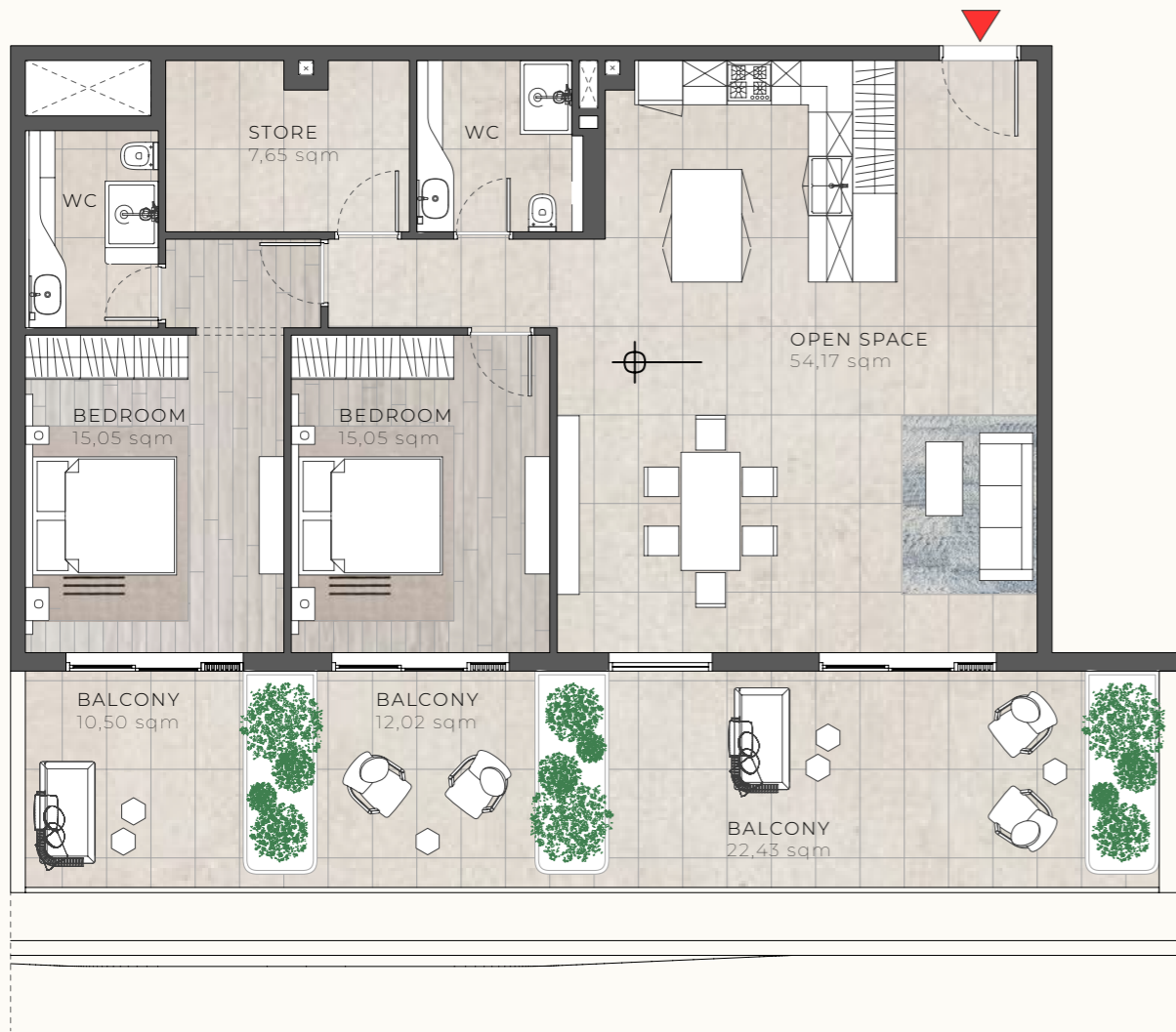
TYPICAL APARTMENT



TOTAL AREA: 70,82 sqm

2 BEDROOM APARTMENT

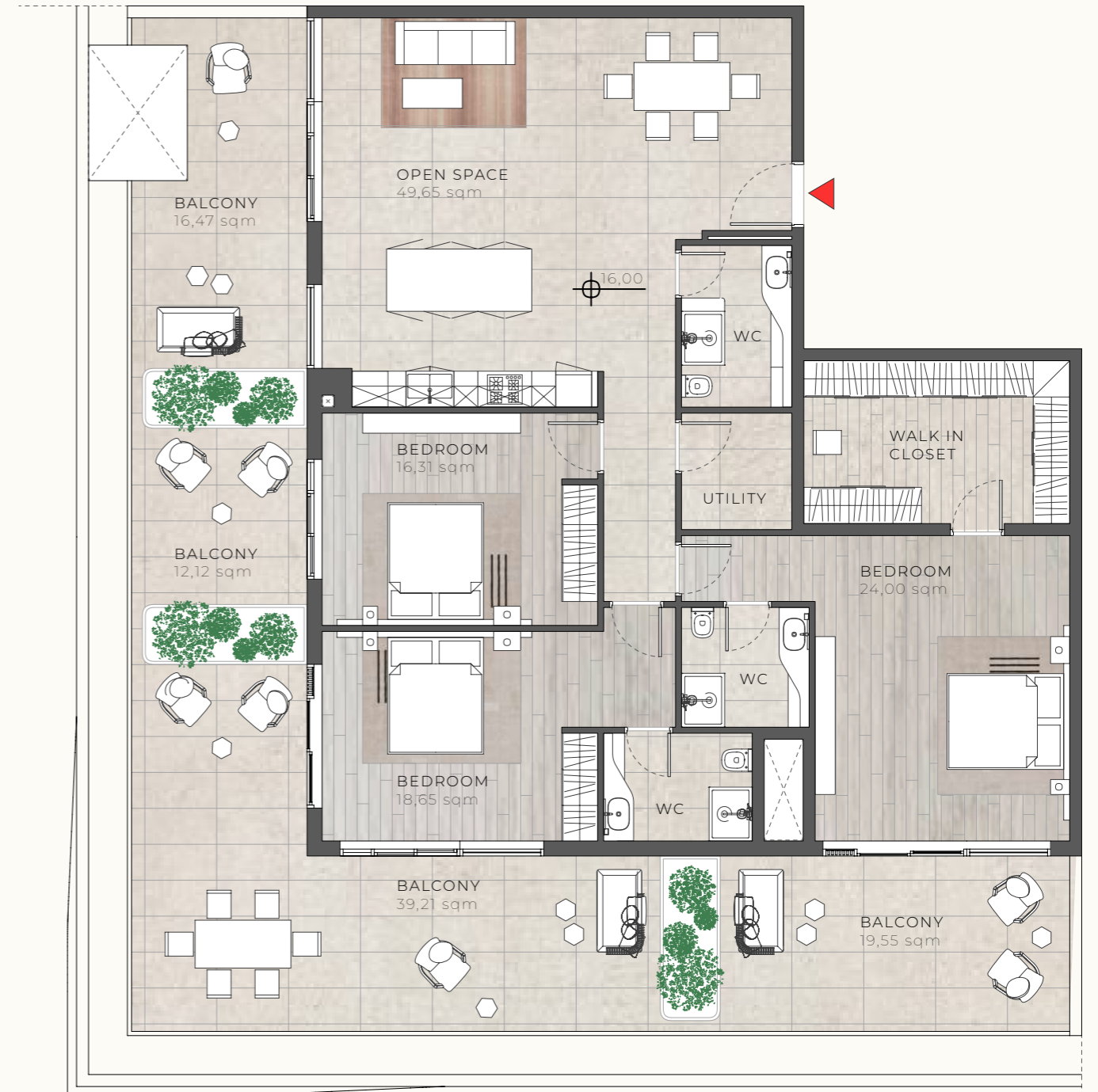
TYPICAL APARTMENT



TOTAL AREA: 107,33 sqm

3 BEDROOM APARTMENT

TYPICAL APARTMENT



TOTAL AREA: 142,79 sqm

M/S L.K. INVESTMENTS LIMITED

Lorem ipsum dolor sit amet, consectetur adipiscing elit, sed diam nonummy nibh euismod tincidunt ut laoreet dolore magna aliquam erat volutpat. Ut wisi enim ad minim veniam, quis nostrud exerci tation ullamcorper suscipit lobortis nisl ut aliquip ex ea commodo consequat. Duis autem vel eum iriure dolor in hendrerit in vulputate velit esse molestie consequat, vel illum dolore eu feugiat nulla facilisis at vero eros et accumsan et iusto odio dignissim qui blandit praesent luptatum zzril delenit augue duis dolore te feugait nulla facilisi. Lorem ipsum dolor sit amet, consectetur adipiscing elit, sed diam nonummy nibh euismod tincidunt ut laoreet dolore magna aliquam erat volutpat.

M/s L.K. Investments Limited

Lorem ipsum dolor sit amet,
consectetur adipiscing elit

394 478 898898